

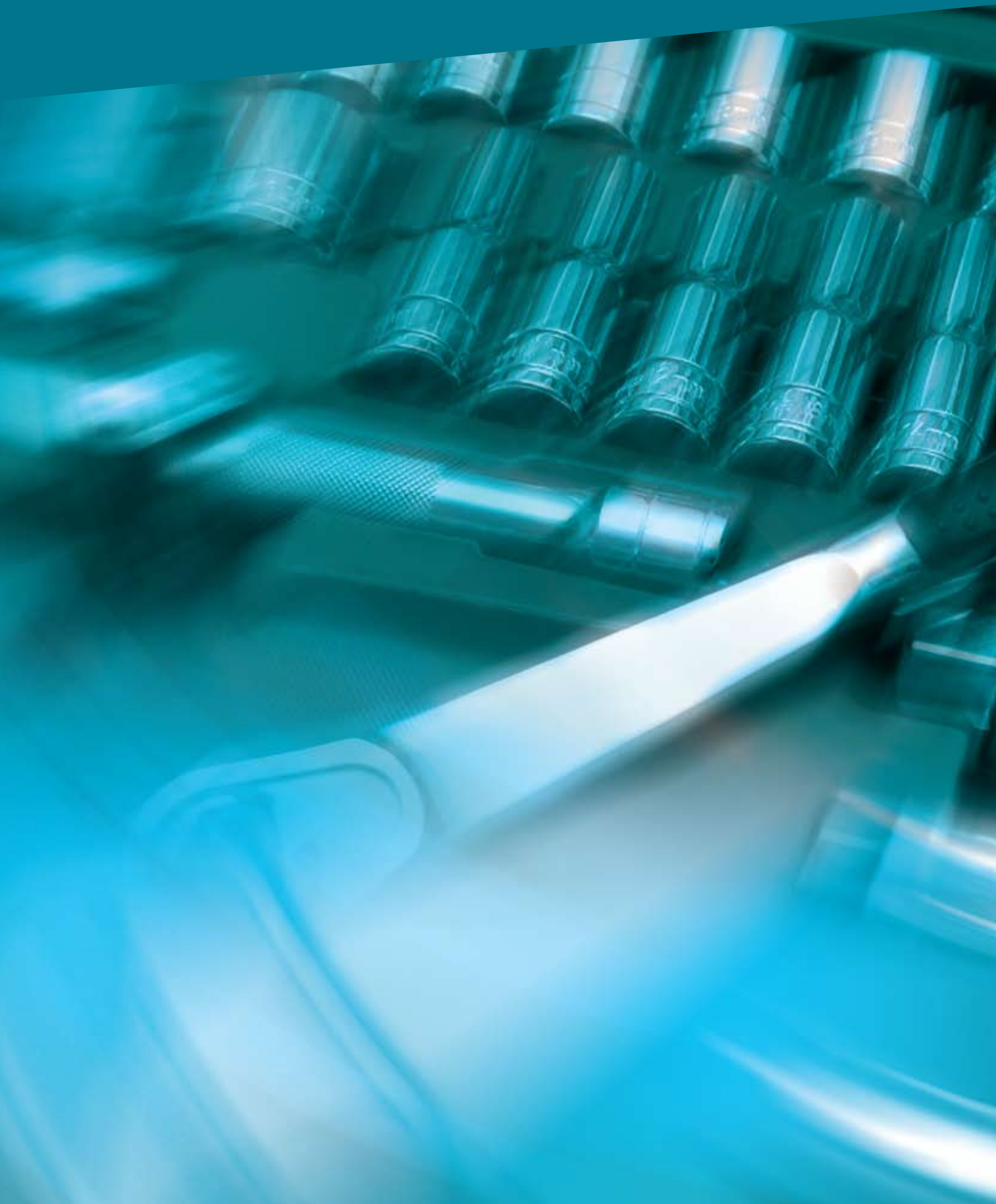
A hydraulic Systems & Torque Wrenches

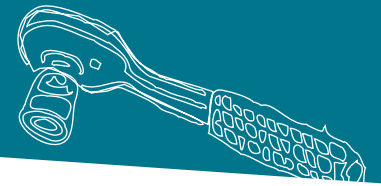


The contents of this product catalogue is a brief introduction of our full product range.



البواردي للأدوات
ALBAWARDI TOOLS & HARDWARE





Code No.	884 PVC
Code No.	884E980
Capacity	1-1/4" - 4" PVC
Capacity	1-1/4" - 4" Ridgid
Weight	176/225Kg

PVC Coated Ridgid Conduit Pipe Bender

GRNL884PVC



Code No.	980-22PS
Capacity	10000Psi
Weight	32Kg

Hydraulic Power Pump 110v

GRNL980-22PS



Code No.	Size
C2	3/8-2"
D3	3/8-3"
E4	3/8-4"
G2-6	2"-6"

Hydraulic Pipe Bender For Normal Pipe

OMCN-E4



Code No.	H6510A
Pressure	100-200PSI
Torque	1400Ft -Lbs
Size	3/4" Drive
Weight	12.3Lbs

Hydraulic Impact Wrench

HYD-H6510A



Hydraulic Pipe Bender

DAIA-PB-2

Code No.	Size
DAIA-PB-1	1/2-3"
DAIA -PB-2	1/2-4"



Hydraulic Impact Rotary Drill

HYD-HID6506

Code No.	HID 6506
Pressure	100-200PSI
Capacity	1/2-Steel 3/4-Concrete
Weight	8.5 Lbs



Electro Hydraulic Pipe Bender For Normal Pipe

OMCN-EM4



Code No.	Size
EM4	3/8-4"
EM6	2"-6"



Hydraulic Breaker

HYD-HPB55-1AVS

Code No.	HPB55-1AVS
Holder	1-1/8"
Pressure	1000-2000Psi



Hydraulic Submersible Pump

HYD-H4665A

Code No.	H4665A
Size	2" NPTF
Pressure	0-2000PSI
Weight	9Lbs



Hydraulic Power Unit

HYD-45895

Code No.	45895
Capacity	20HP



Code No.	6020AB
Range	90-600Ft /Lbs
Drive Size	3/4" Drive
Weight	11.60Lbs
Length	41-1/2"

Torque Wrench

Proto6020AB



Code No.	6169F
Range	0-75in/Lbs
Size	1/4" Drive
Weight	1.4 Lbs
Length	10"

Torque Wrench Dial Type

Proto6169F



Code No.	6126-2F
Range	0-250Ft/Lbs
Drive Size	1/2"
Weight	4.5Lbs
Length	24-3/8"

Torque Wrench Dial

Proto6126-2F



Code No.	6346
Range	0-250Lbs
Drive Size	1/2"
Weight	2.8Lbs
Length	22"

Electronic Torque Wrench

Proto6346



Code No.	6014 C
Range	50-250Lbs
Drive Size	1/2"
Weight	4.68Lbs
Length	26-1/4"

Torque Wrench Ratchet Head

Proto6014C



Code No.	093-010
Model No.	750-1400Lbs 105-1890Nm
Drive Size	1"

Torque Wrench

Wrench093-010



Code No.	6025
Range	300-200Ft/Lbs
Drive Size	1"
Weight	53.1Lbs
Length	107-1/2"

Torque Wrench Fixed Head

Proto6025



Code No.	6222
Range	2200 Lbs
Size	1/2" Input -1" Output
Weight	20.6Lbs
Length	20"

Torque Multiplier

Proto6222



Code No.	6106
Range	2-36in/Lbs
Drive Size	1/4"
Weight	0.8Lbs
Length	7-3/16"

Torque Screwdriver

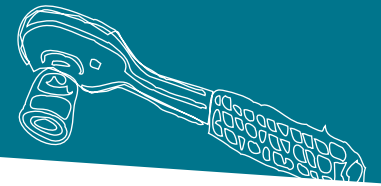
Proto6106



Code No.	6252
Range	8000Lbs
Size	1/2" Drive Input- 1/2" Drive Output
Weight	50.3Lbs
Length	15-3/16"

Torque Multiplier

Proto6252



Hydraulic Bottle Jack

MegaY-25

Code No.	Capacity
Y-2	2 ton
Y-12	12 ton
Y-20	20 ton
Y-25	25 ton



Hydraulic Bottle Jack

Jack002-12.0

Code No.
002-12.0
002-20.0



Hydraulic Low Profile Single Acting Cylinder

Rampac-RC50LPS

Code No.	Capacity
RC05LPS	5 ton
RC20LPS	20 ton
RC50LPS	50 ton
Rc100LPS	100 ton



Hydraulic Hand Pump

RamPac-HP150

Code No.	HP45
Code No.	HP150
Pressure	10000 Psi



Hydraulic Single Acting Cylinder

Rampac-RC20SA6.5

Code No.	RC20SA6.5
Capacity	20 Ton
Closed Height	10-3/4"
Extended Height	17-3/8"
Weight	22 Lbs



Hydraulic Hand Pump

DAIA-P700

Code No.	Pressure
P 700	10000Psi



Hydraulic Center Hole Single Acting Cylinder

Rampac-RC30CH2.5

Code No.	RC30CH2.5
Capacity	30 Ton
Closed Height	7-1/16
Extended Height	9-9/16



Portable Single Acting Hydraulic Puncher

Nitto-HA11-1624



Code No.	HA11-1624
Code No.	SC 05
Capacity	Th16mm/DIA 24mm
Weight	30Kg/27.5Kg



Water Pressure Pump

Pump001-06

Code No.	Capacity
001-04	50Kg/700Psi
001-05	100Kg/1400Psi
001-06	300Kg/4200Psi



Hydraulic Cable Cutter without Pump

DAIA-CR75

Code No.	Capacity
CR57	57mm
CR75	75mm
CR100	100mm
CR150	150mm



OMCN

Code No.	264
Capacity	8 Ton
Height	560mm
Weight	100 Kg

Hydraulic Trolley Jack

OMCN-264



Hydraulic Hand Pallet Truck

HYD-HPT25000AV

Code No.	Range
HYD-HPT 25000Av	2.5 Ton



Hydraulic Lifting Table

LIFT002-18660

Code No.	Capacity
002-18660	660Lbs



Hydraulic Hand Pallet Truck

C-Trolley001-02.55

Code No.	Capacity
001-02.0s	2 Ton
001-02.5s	2.5 Ton
001-03.0s	3 Ton



Hydraulic Lifting Table

C-Trolley003-0050

Code No.	003-0050
Capacity	500kg
Max Height	H36x63x32"
Weight	122kg



Hydraulic Dieless Crimping Tool

GRNL1990

Code No.	1990
Crimp	1000MCM
Weight	16.5 Lbs



Hydraulic Crimping Tool

ELC Equip003-03

Code No.	Crimp Size
003-02	6-240 Sqmm ²
003-03	10mm-400Sqmm ²



Hydraulic Dieless Crimping Tool

ELC Equip990-06

Code No.	Range
990-06	0-1000MCM



Hydraulic Crimping Tool

ELC Equip003-01

Code No.	Crimp Size
003-01	16-630sqmm ²
003-00	95-100sqmm ²



Hydraulic Crimping Tool without Dies

Elec Equip990-05

Code No.	Range
990-05	10-300sqmm ²